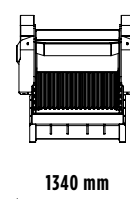
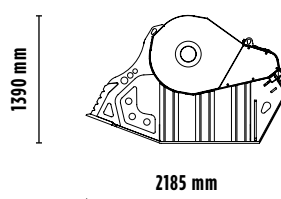
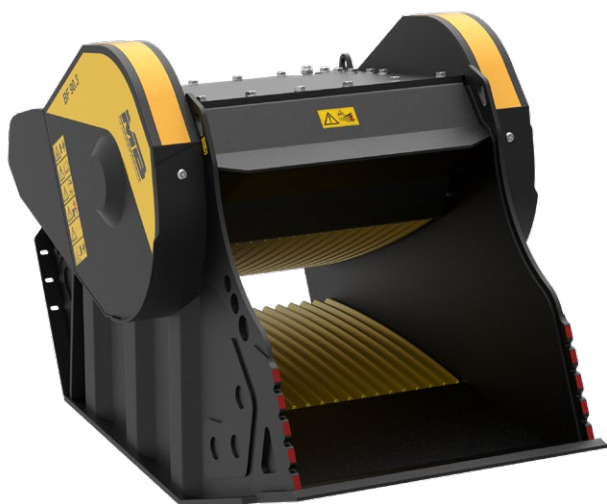


# BF 90.3 S4

**MB**  
THE CRUSHING EVOLUTION



## ACCESSORIES

- RECOMMENDED SPARE PARTS KIT
- FIX COUPLER
- IRON SEPARATOR
- HOUR METER
- DUST SUPPRESSION KIT
- 24 MONTHS WARRANTY



## CARACTÉRISTIQUES TECHNIQUES

MACHINE OPÉRATRICE  ≥ 21 Ton

CAPACITÉ DE CHARGEMENT 0,90 m<sup>3</sup>

DIMENSIONS BOUCHE L 910 H 540 mm

RÉGLAGE CONCASSEUR À LA SORTIE ≥ 15 ≤ 140 mm

DIMENSIONS 2185 x 1340 H 1390 mm

DÉBIT HUILE 180 l/min.

PRESSION > 220 bar

POIDS 3,50 Ton

## DOMAINES D'APPLICATION



RECYCLAGE



CHANTIERS  
URBAINS



TRAVAUX  
ROUTIERS



DÉMOLITIONS



EXCAVATIONS



CARRIÈRES  
ET MINES



FONDERIES



TUNNELS  
ET LIEUX  
FERMÉS

WWW.MBCRUSHER.COM       

The data provided above is not binding, as the manufacturer reserves itself the right to make improvements to its products at any time and with no advance notice.  
References to excavator weights are approximate and many may be subject to changes.

EN SAVOIR  
PLUS

