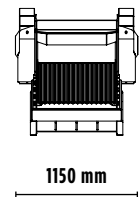
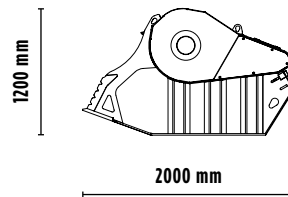
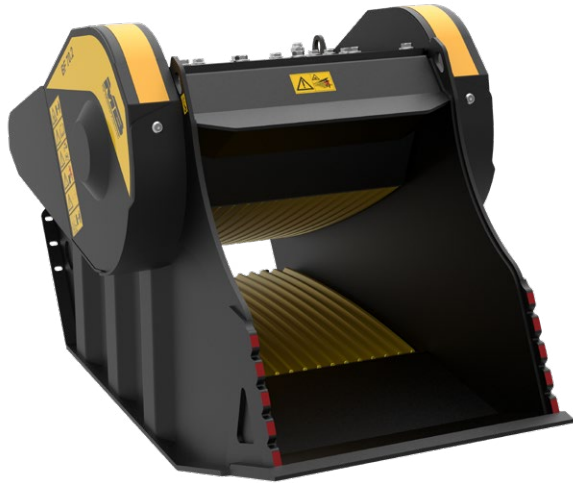


# BF 70.2 S4

**MB**  
THE CRUSHING EVOLUTION



## ACCESSORIES

- KIT PIÈCES DÉTACHÉES CONSEILLÉ
- RACCORD FIXE
- AIMANT SÉPARATEUR
- COMPTEUR
- KIT BRUMISATEUR
- GARANTIE 24 MOIS



## CARACTÉRISTIQUES TECHNIQUES

MACHINE OPÉRATRICE  ≥ 14 Ton

CAPACITÉ DE CHARGEMENT 0,66 m<sup>3</sup>

DIMENSIONS BOUCHE L 740 H 510 mm

RÉGLAGE CONCASSEUR À LA SORTIE ≥ 15 ≤ 130 mm

DIMENSIONS 2000 x 1150 H 1200 mm

DÉBIT HUILE 140 l/min.

PRESSION > 220 bar

POIDS 2,3 Ton

## DOMAINES D'APPLICATION



RECYCLAGE



CHANTIERS  
URBAINS



TRAVAUX  
ROUTIERS



DÉMOLITIONS



EXCAVATIONS

WWW.MBCRUSHER.COM       

The data provided above is not binding, as the manufacturer reserves itself the right to make improvements to its products at any time and with no advance notice.  
References to excavator weights are approximate and many may be subject to changes.

EN SAVOIR  
PLUS

